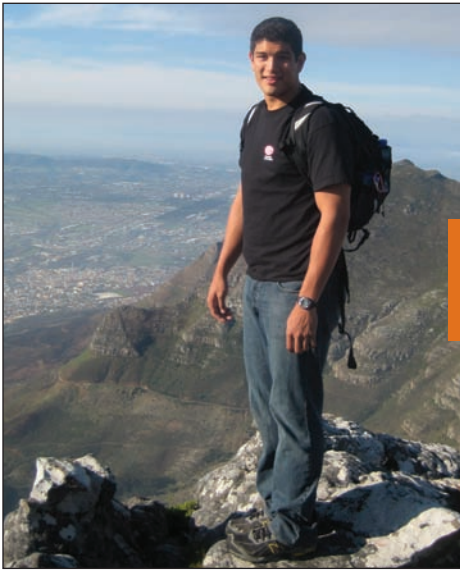


# Babson Scholar Leads as Social Entrepreneur



Nick Pineda, Babson Posse 4.

Nick Pineda is a junior at Babson College, studying strategic management. His goal is to create meaningful social change through business initiatives, entrepreneurial planning and a lot of determination.

## scholar highlight

Nicholas Pineda  
 Babson Posse 4

After the completion of his sophomore year, Nick was one of eight select Babson students chosen to participate in a study abroad course in Stellenbosch, South Africa, that focused on entrepreneurship and developing economies. In just three short weeks, he was able to encourage and empower students in local townships to begin their own small businesses.

This summer, Nick interned with StartingBloc, an organization that educates, inspires and connects emerging leaders to drive social innovation across sectors. He facilitated the development of StartingBloc's marketing materials and 2010 strategic plan, expanding the

## HIS GOAL IS TO CREATE SOCIAL CHANGE THROUGH BUSINESS INITIATIVES AND ENTREPRENEURIAL PLANNING

organization's potential to reach more people. Nick's supervisor was amazed by his performance, calling him self-motivated and forward thinking at a time of transition for the organization.

Hundreds of Posse Scholars had

See "NICK" on Page ii

# New York Advisory Board Member Promotes Diversity

Kelly Granat was first introduced to Posse in 2007 through former New York Advisory Board member Alastair Borthwick. The Advisory Board is always interested in bringing in new, young lay professionals, and Kelly, with an impressive history of volunteering with educational programs, was a wonderful match for Posse New York.

## board member highlight

Kelly Granat  
 Posse New York Advisory Board



Kelly Granat, managing director at Lone Pine Capital.

"I felt an emptiness," she says. "I had wanted to get involved again with education when Posse came along."

Growing up in Roslyn, New York, Kelly's family placed a high value on education and her parents emphasized it as a core value. "Education was the top priority," Kelly says. "We were always told that education was 'the great leveler.'"

Kelly's mother, a teacher at Roslyn

High School and an active member of the school's Anti-Bias Task Force, also instilled in her children an appreciation for diversity.

After graduating from Roslyn, Kelly left behind a fairly homogeneous suburban

town and matriculated at Harvard College, where she "really saw diversity come to life." She was struck by how the experience

## PEOPLE WITH DIFFERENT BACKGROUNDS BRING DIFFERENT PERSPECTIVES THAT ENRICH THE PROCESS

of reading the same material as a classmate but hearing an entirely different perspective enhanced her learning and broadened her view of the world.

"Recruiters can often resort to a closed-in loop in high school recruitment that doesn't help to build diversity," she says. "Posse helps schools reach further and tap into networks they couldn't otherwise access with their limited resources."

After graduating from Harvard Business School with an M.B.A., Kelly went on to a career in financial services.

See "KELLY" on Page ii

# New Director Joins Posse New York Team

The Posse Foundation welcomes Sasha McDowell as the new director of Posse New York. Sasha holds a B.A. from Trinity College—a Posse partner institution—and a dual master’s degree in public administration and clinical social work from Columbia University.



Sasha McDowell.

She has also worked for Bank of New York Mellon, overseeing the funding relationships with eight community-based youth organizations, as well as La Alianza

**I FEEL AT HOME IN AN ORGANIZATION THAT VALUES NONTRADITIONAL LEADERSHIP AND CREATIVITY**

Hispana, a community-based organization in Roxbury, Massachusetts, where she managed afterschool programs.

Sasha views Posse as a perfect fit. “I have always had a nontraditional approach to working with youth, so I feel at home in an organization that values nontraditional leadership and creativity,” she says. “I am especially excited to be a part of the Posse team.” Posse is pleased to welcome Sasha.\*

## staff highlight

Sasha McDowell  
Posse New York Director

With a history of promoting social justice causes, she is committed to helping promising underserved youth achieve.

“I grew up in a small town where differences were often misunderstood and devalued rather than celebrated,” Sasha says. “As a child, I was very interested in people from diverse backgrounds and developed a strong sensitivity to inequality and an appreciation for what it meant to be

the underdog.”

Prior to joining Posse, Sasha was an Education Pioneers Fellow at the New York City Department of Education.

### “NICK” from Page i

the opportunity to learn about Nick’s transformative experience at this year’s Internship Celebration in New York. He was the recipient of an Inavale Award, which is given to Scholars in each Posse city who exhibit outstanding leadership and commitment at a nonprofit or public service organization.

“My internship with StartingBloc was the beginning of my passion to pursue business opportunities that create value in our communities and in the world,” Nick says.\*

### “KELLY” from Page i

Now a managing director starting her fourth year at Lone Pine Capital, Kelly is constantly looking for ways to promote critical, creative, and independent thinking.

“Diversity is incredibly important in the workplace,” she says. “It’s needed because people with different backgrounds bring different perspectives that enrich the evaluation and decision-making process. Plus, it’s much more interesting and rewarding to work in a diverse environment.”\*

extra special thanks to



The Posse Foundation is grateful to The Nielsen Company for its lead sponsorship of the Posse New York Awards Ceremonies in both 2009 and 2010.

## new york advisory board

Joe DePlasco	Managing Director, Dan Klores Communications
Charles Edell	PhD Candidate, Department of History, Yale University
Kelly Granat	Managing Director, Lone Pine Capital
Bill Henderson	Partner, Russell Reynolds
Nancy Mistretta	Retired Partner, Russell Reynolds
Kevin Reilly	Partner, Transaction Support, Ernst & Young LLP
Ethan Riegelhaupt	Vice President, Speechwriting and Internal Communications, The New York Times Company
Jane Dawson Shang	Private Sector

## posse new york partner colleges + universities

Babson College	Dickinson College	Middlebury College
Brandeis University	Franklin & Marshall College	Trinity College
Colby College	Lafayette College	Vanderbilt University
DePauw University	Lawrence University	Wheaton College

## posse new york

Sasha McDowell, Director  
14 Wall Street, Suite 8A-60  
New York, NY 10005  
Phone: (212) 405-1691  
Fax: (212) 405-1698  
newyork@possefoundation.org

## national office

14 Wall Street, Suite 8A-60  
New York, NY 10005  
Phone: (212) 405-1691  
Fax: (212) 405-1697  
info@possefoundation.org

visit posse on the web at:  
[www.possefoundation.org](http://www.possefoundation.org)